

CONSULTANT:

18024
APEX 400
 Apartments
 400 Main Street

CLIENT:
Debb Kosich
 Management
 1111 East Touhy, Suite 230,
 Des Plaines, IL 60018

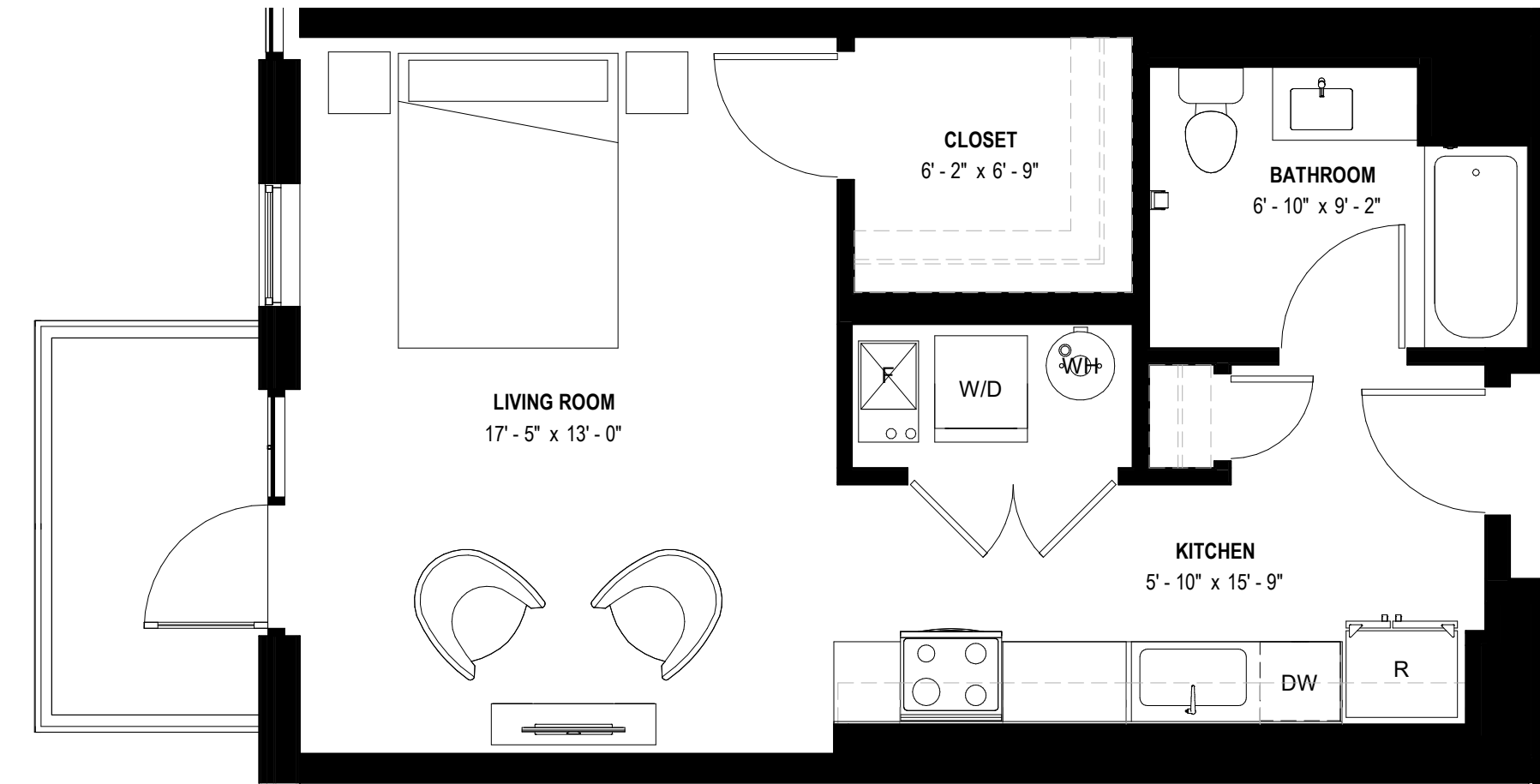
MISSNER GROUP
 1700 E. Higgins Rd.,
 Des Plaines, IL 60018

5	P&D Review Part 5	11/19/18
4	P&D Review Part 4	11/01/18
3	P&D Review Part 3	10/01/18
2	P&D Review Part 2	08/31/18
1	P&D Review Part 1	07/16/18

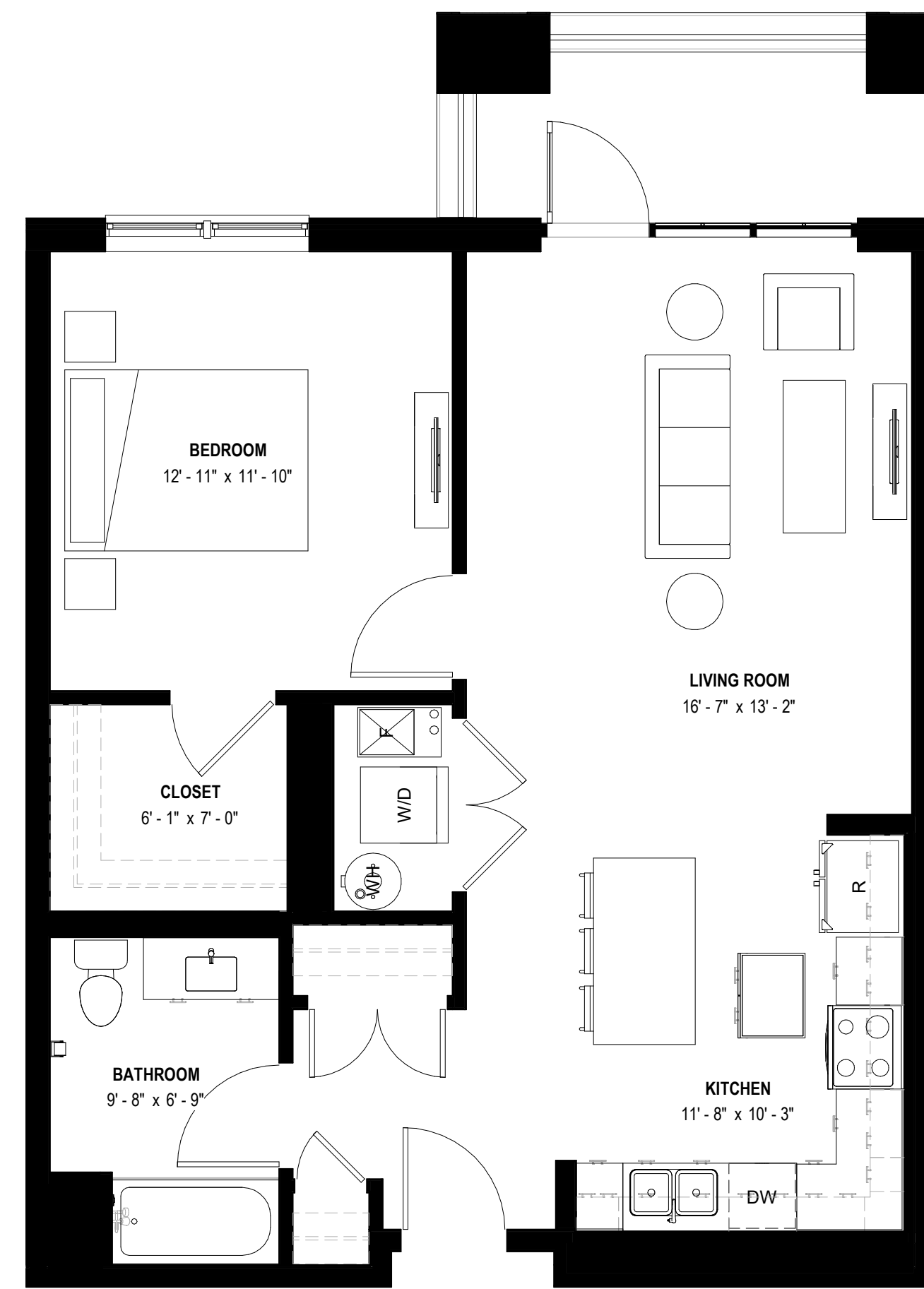
#	DESCRIPTION	DATE
---	-------------	------

TYPICAL
 RESIDENTIAL
 UNITS

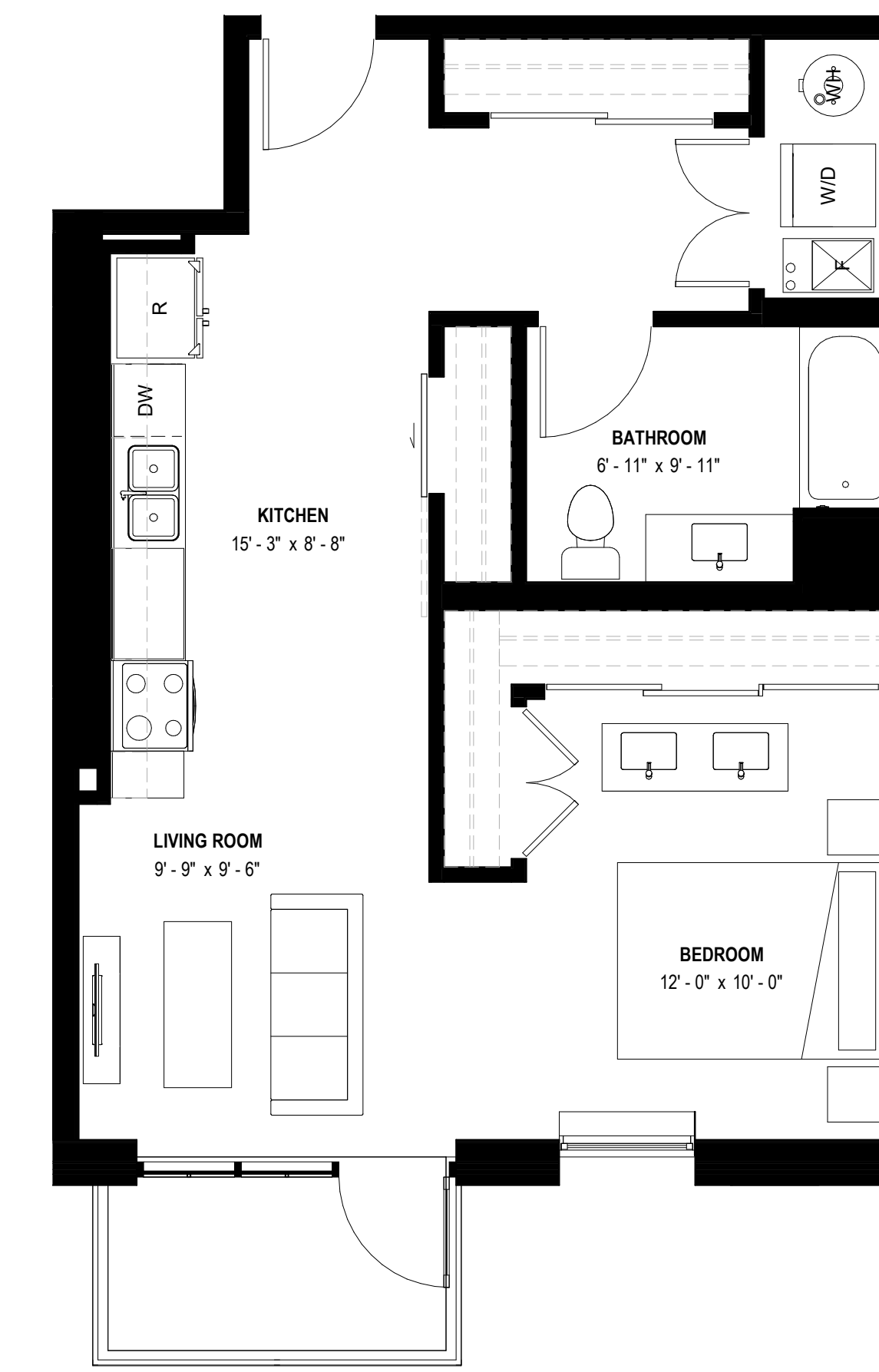
PDR-6



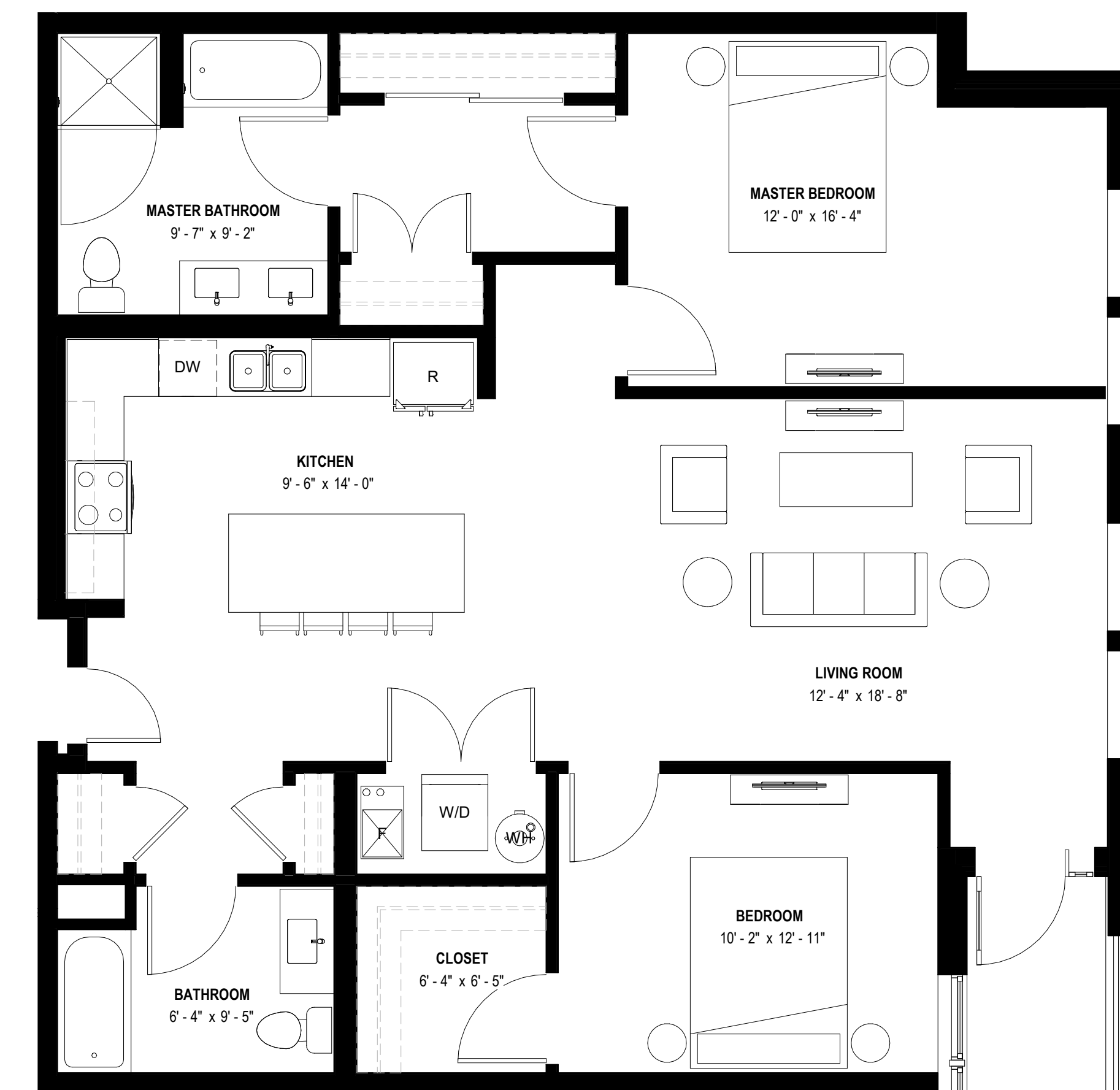
2 STUDIO - TYPE 1 - 555 SF
 1/4" = 1'-0"



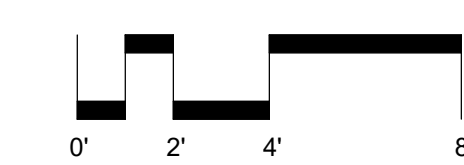
1 1 BEDROOM - TYPE 1 - 815 SF
 1/4" = 1'-0"



4 CONVERTIBLE - TYPE 1 - 675 SF
 1/4" = 1'-0"



3 2 BEDROOM - TYPE 1 - 1285 SF
 1/4" = 1'-0"



COPYRIGHT: FitzGerald Associates Architects reserves all copyright and other proprietary rights in these plans. These plans are not to be reproduced, changed or copied in any form or manner whatsoever, not and they to be assigned by any third party without the express written permission of FitzGerald Associates Architects. These drawings may have been reproduced for your information only and are not to be used for any other purpose. Do not scale drawings.

C:\Users\jhepsum\Documents\18024 - Apex Apartments_jhepsum.rvt

11/20/2018 4:19:07 PM